

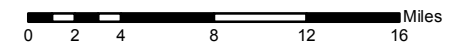
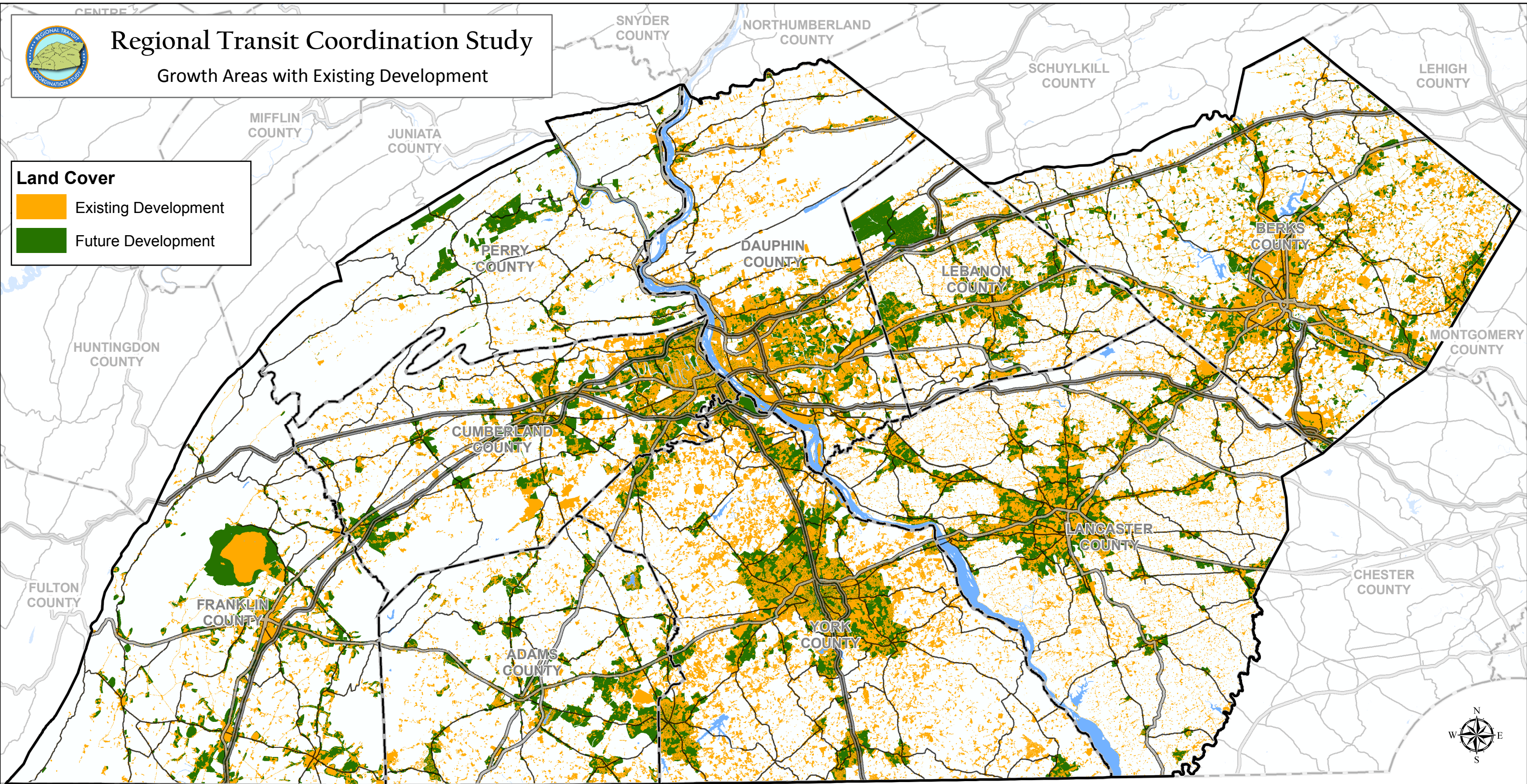


Regional Transit Coordination Study

Growth Areas with Existing Development

Land Cover

- Existing Development
- Future Development



Legend

- | | |
|------------|---------------|
| Study Area | Interstate |
| County | US Highway |
| Water Body | State Highway |

Notes:

- Portions of this map were generated from the sources listed to the right.
- Existing land use from each county was combined into one map layer and the existing classifications were placed into "Developed" and "Undeveloped" categories.
- Future land use was also combined into one map layer and generalized into "Developed" and "Undeveloped" land use. The Counties of York and Lancaster did not have future land use available, but growth areas from each county were used to show potential future development.

Sources:

- Existing Land Use - The Counties of Adams (2007), Berks (2000), Cumberland (2003), Dauphin (2004), Franklin (2005), Lancaster (2005), Lebanon (2007), Perry (2007), and York (2010)
- Future Land Use - The Counties of Adams (2010), Berks (2020), Cumberland (2020), Dauphin (2020), Franklin (2010), Lebanon (2020), and Perry (2020)
- Growth Boundaries - The Counties of Lancaster and York
- Census Tracts - U.S. Census Bureau
- Roads, Waterbodies, Boundaries - PennDOT
- Transit Routes - Counties of Berks, Cumberland, Dauphin, Lancaster, Lebanon, and York