

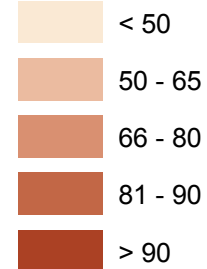


Regional Transit Coordination Study

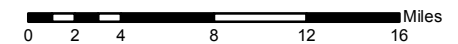
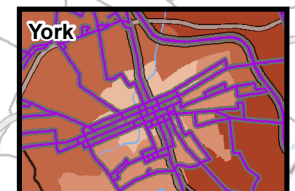
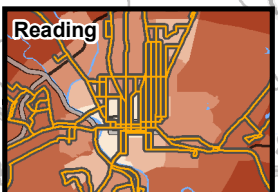
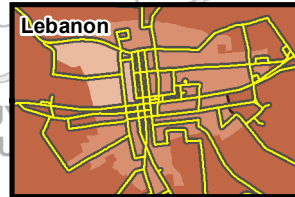
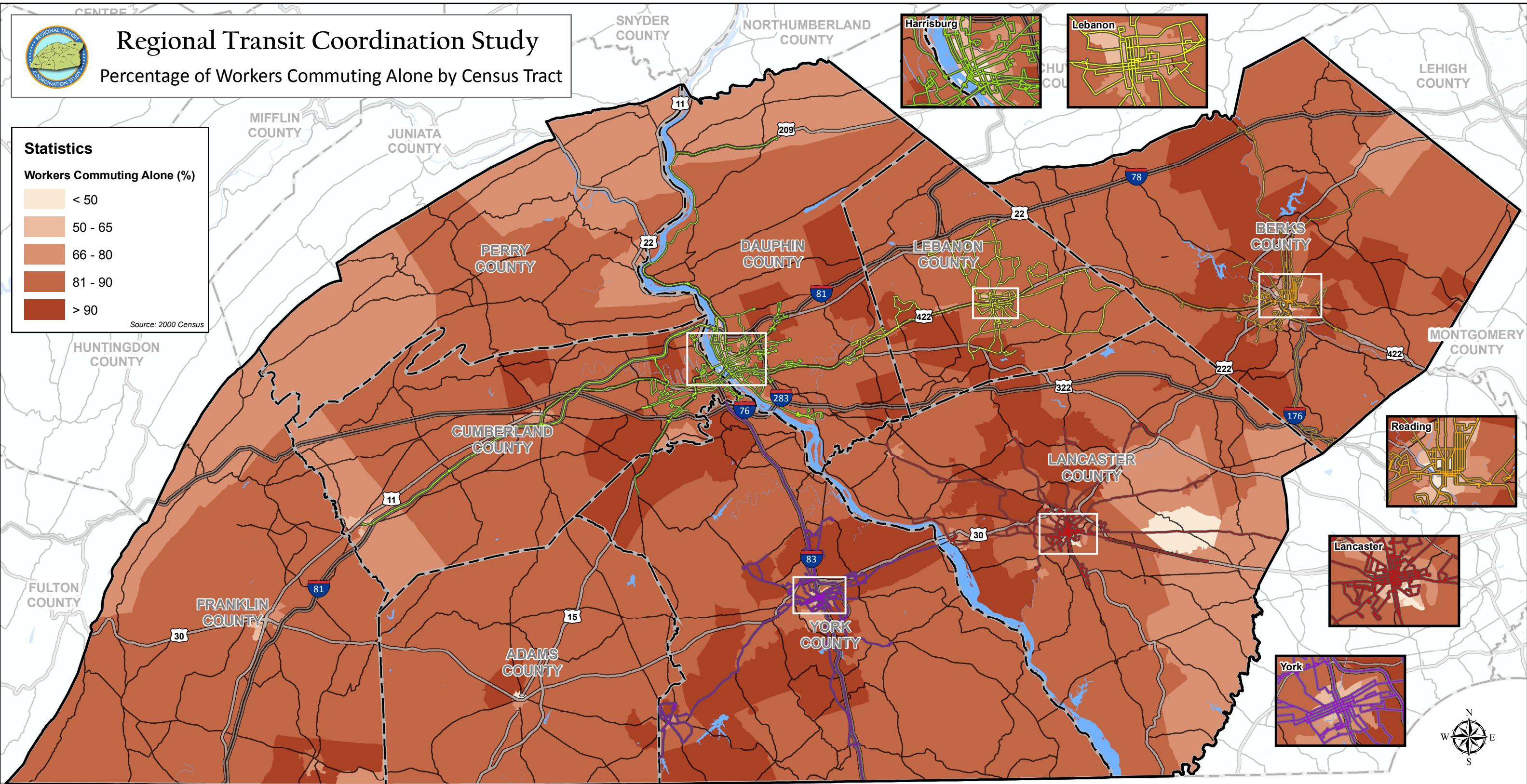
Percentage of Workers Commuting Alone by Census Tract

Statistics

Workers Commuting Alone (%)



Source: 2000 Census



Legend

- | | | |
|--|---------------|--------------------------|
| | Roads | Transit Authority |
| | Interstate | BARTA |
| | US Highway | RRTA |
| | State Highway | COLT |
| | | CAT |
| | | YCTA |

Notes:

- Portions of this map were generated from the sources listed to the right.
- From the 2000 Census data, the categories used for workers driving alone to work include Workers Driving a Car, Van, or Truck.
- The percentage displayed was calculated by taking the total number of workers who drive alone divided by the total number of workers minus workers who work from home.

Sources:

- Worker Travel Data - U.S. Census Bureau: 2000 Census
- Census Tracts - U.S. Census Bureau
- Roads, Waterbodies, Boundaries - PennDOT
- Transit Routes - Counties of Berks, Cumberland, Dauphin, Lancaster, Lebanon, and York