



# COUNTY HIGHLIGHTS

Over the year, we have worked to strengthen our partnerships on the County level. Please see a few of the many highlights from each county.




**ADAMS COUNTY:**

- Vanpool started at Pero Family Farms assisting out-of-state employees
- Provided in depth overview of Commuter Services program to members of ACTPO
- Participated in resource fair co-hosted by Adams County Domestic Relations and PA CareerLink




**BERKS COUNTY**

- Ashley Furniture set up permanent table in new employee resource center showcasing programs of Commuter Services
- Presented during quarterly meeting for Advanced Manufacturing Next Generation Industry Partnership with Chamber
- Participated in Berks County Bike Share Group




**FRANKLIN COUNTY**

- Presented to Franklin County Council of Governments to provide details on transportation resources and Commute PA
- Franklin County placed 3rd in the Clash of the Counties challenge
- Helped to promote new Stop Hopper in Chambersburg




**LANCASTER COUNTY**

- County of Lancaster was the Clash of the Counties Winner tracking 344 green trips
- Coffee and Collaborations held with RRTA and local businesses
- Eurofins Lancaster Labs led a Sustainability Peer Group with Employer Transportation Coordinators




**LEBANON COUNTY**

- DHL Supply Chain Annville renewed Best Workplaces for Commuters
- DHL Supply Chain Annville placed in the top 5 in the Car Free Month race
- Continued outreach with employers along Route 72 to promote Lebanon Transit



**TRI-COUNTY (Cumberland, Dauphin, Perry)**

- Invited to participate and speak at PennDOT Bike to Work Week Multi-Modal Event
- PSECU presented to ETC Telework Peer group on hoteling
- Involved with development of Perry County transportation survey



**YORK COUNTY**

- Walk Bike Bus York most successful year eliminating 4,454 miles
- Participated in York County Bike and Pedestrian Committee
- York County CareerLink won Clash of the Careerlinks

# ABOUT US

**Commuter Services is a program of the non-profit Susquehanna Regional Transportation Partnership, whose board includes:**

- TRANSIT AUTHORITIES**

Lebanon Transit, South Central Transit Authority (BARTA & RRTA) and Susquehanna Regional Transportation Authority (CAT & rabbitransit)
- METROPOLITAN PLANNING ORGANIZATIONS (MPOs)**


Adams, Franklin, Harrisburg (Cumberland, Dauphin and Perry counties), Lancaster, Lebanon, Reading and York
- CHAMBERS OF COMMERCE AND ECONOMIC DEVELOPMENT**

The Harrisburg Regional Chamber & CREDC; Greater Chambersburg and Lebanon Valley Chambers of Commerce; Greater Reading Chamber Alliance; Lancaster Chamber of Commerce & Industry; The Chamber of Gettysburg & Adams County and the York County Economic Alliance.

Funding is provided by the Federal Highway Administration and PennDOT in partnership with the participating MPOs.

# TRY-IT PROMOTIONAL EVENTS


## Earth Day



In April, we celebrated Earth Day the entire month! We invited commuters to record their green trips in Commute PA and engage with our social media posts by answering questions. In addition to the social media component, we held a 'race' among 15 organizations to see who could record the most green trips. **Eurofins (Lancaster, 855 green trips)** was the organization with the most trips tracked. We appreciate all of the organizations that participated including, **County of Lancaster (464 green trips), Franklin & Marshall (Lancaster, 408 green trips), Four Seasons Produce, Inc. (Lancaster, 156 green trips) and United Disabilities Services (Lancaster, 131 green trips).**




## Bike Month



National Bike to Work Day was May 20th and we encouraged regional commuters to try bicycling during the entire month of May and record those bike trips in Commute PA. In addition, we invited them to answer bike related questions on our social media pages. To add some friendly competition during the month, 13 employers and organizations participated in a Commute PA race. Congratulations to **Franklin & Marshall College (Lancaster, 172 bike trips)** and their faculty, staff, and students for having the most bike trips in May! Special thanks to **Eurofins (Lancaster, 161 bike trips), County of Berks (129 bike trips), County of Lancaster (106 bike trips) and Masonic Villages (Lancaster, 104 bikes trips)** for being the top leading organizations!



## Car Free Month



In September, we challenged commuters to find a new commute mode instead of driving alone to celebrate Car Free Month! Commuters were asked to participate by recording green trips in Commute PA during the month and engage in social media posts. Congratulations **Eurofins (Lancaster)** for having the most green trips tracked, with 1,123! Special thanks to our runner-up organizations, **County of Lancaster (393 green trips), Thermo Fisher Scientific (Dauphin, 320 green trips), Masonic Villages (Lancaster, 40 green trips) and DHL (Lebanon, 26 green trips).**



2022  
**INNOVATING  
MOBILITY  
OPTIONS**

**COMMUTER SERVICES  
OF PENNSYLVANIA**

**PaCommuterServices.org  
1.866.579.RIDE**

LEADERSHIP



MICHAEL GOLEMBIEWSKI, Chair

As we wrap up 2022 and enter 2023, some aspects of life are returning to the way they were “pre-pandemic”. Gasoline prices, like traffic volumes, have risen. Although we’ve become better acquainted with Zoom and Teams, in-person meetings are once again taking up a larger part of our work week. For many of us, however, the commute – in whatever form it takes – is still part of our daily lives. The Susquehanna Regional Transportation Partnership (S RTP) and the Commuter Services program continue to work with commuters to promote alternatives that reduce congestion, improve air quality, and reduce commuting costs. With continued gratitude to our member agencies and partners at PennDOT & the Federal Highway Administration, the S RTP and our consultant team continues to expand our outreach, to more commuters and their employers, about commuting options.

As I look back at the past four years as Chairman of this great organization, I am proud of how our membership and consultant team have continued to embrace the organizational’s mission: “To promote commuting options that reduce congestion, conserve natural resources, and improve safety and mobility at a regional level, by educating and implementing innovative Transportation Demand Management (TDM) programs.” We’ve done so by reviewing and improving current programs, implementing new ideas, and continuing to investigate other programs. Ultimately, it takes the S RTP Board, our professional staff, and the program participants working together to make the Commuter Services program the success that it is. It is my sincere wish that 2023 brings health, happiness, and easier commutes for all!



MATTHEW BOYER, Executive Director

The last page of the 2022 calendar has turned and before fully setting our sights on the opportunities of the upcoming year, let’s take a quick look at the road traveled in TDM over the past twelve months.

The Commuter Services outreach team has been back in full swing reaching our employer and community partners on-site and in-person. The majority of COVID restrictions have been lifted and while virtual meetings still serve an important role in our education and outreach efforts, the ability to shake hands and interact with people is irreplaceable.

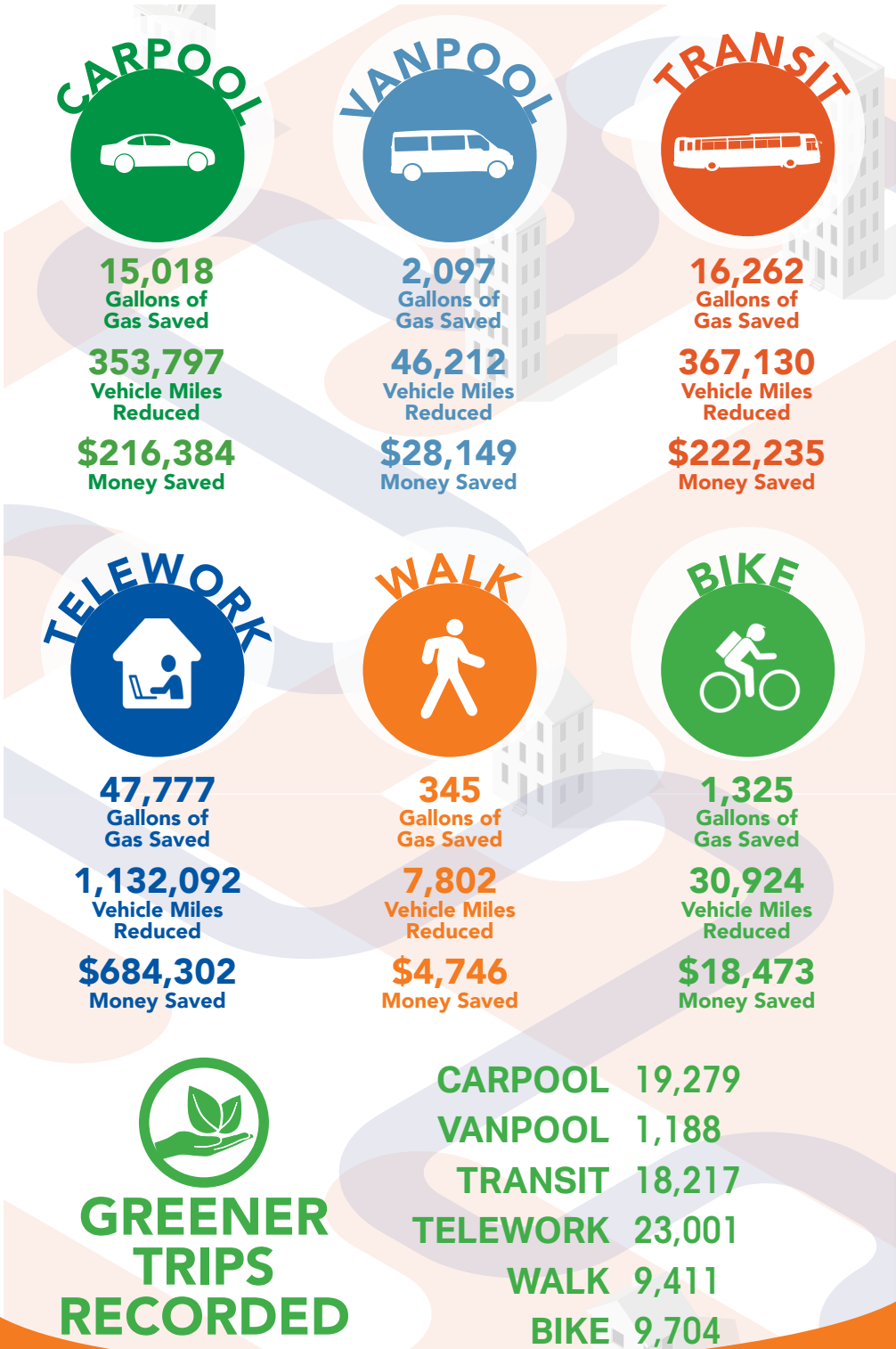
A large portion of employees still enjoy the flexibility of teleworking and one of the positive outcomes of the COVID period was the outstanding success of new telework policies for many career fields. For those who returned to the office, the daily trials of traffic congestion, parking fees, tolls and hefty gasoline prices have kept commuters attuned to the cost saving programs of Commuter Services of PA.

The Board of Directors at the Susquehanna Regional Transportation Partnership (S RTP) has been a pillar of strength working with the TDM consultant team for nearly twenty years to deliver services to the region. This partnership has been spearheaded for the past four years by our outgoing Chairman, Michael Golembiewski of the Berks County Planning Department. As Mike wraps up his term as Chairman, I offer a sincere “thank you” for his selfless service to the organization and his tireless efforts to include the programs of Commuter Services into every conversation, Zoom call and Teams meeting during his tenure as Chairman. His energy, dedication and commitment to the cause will be missed.

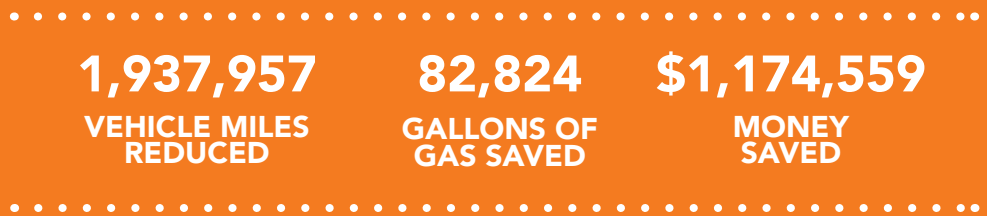
OUR MISSION STATEMENT

The Susquehanna Regional Transportation Partnership (S RTP) /Commuter Services of Pennsylvania promotes commuting options that reduce congestion, conserve natural resources and improve safety and mobility at a regional level by educating and implementing innovative Transportation Demand Management (TDM) programs. The Transportation Demand Management (TDM) program, Commuter Services of PA, was developed and implemented by the S RTP Board of Directors which comprises the transit agencies, metropolitan planning organizations and chambers of commerce across these participating counties.

COMMUTE PA 2022 STATISTICS



TOTAL COMMUTER SAVINGS



BY THE NUMBERS



Emissions Reduced

	NITROGEN OXIDE NOx (lbs.)	VOLATILE ORGANIC COMPOUND VOCs (lbs.)	CARBON DIOXIDE CO2 (tons)
CARPOOL	464	458	147
WALK	10.2	10.1	3.38
TRANSIT	482	475	159
BIKE	40.6	40	13
VANPOOL	60.6	59.8	20.6
TELEWORK	1,485	1,465	468

Total Reductions

NOx (lbs.)	VOC (lbs.)	CO2 (tons)
2542.4	2507.9	810.98

Customer Service Inquiries

60%	34%	6%
PHONE CALLS	EMAILS/TEXTS	LIVE CHATS
6	15	9
NEW COMMUNITY PARTNERS	NEW EMPLOYER PARTNERS	ERH TRIPS PROVIDED
218	452	
EVENTS HELD	MEETINGS HELD	

Best Workplaces for Commuters (BWC)

An innovative program providing qualified employers national recognition and an elite designation for implementing transportation demand management programs. By offering outstanding commuter benefits and meeting a National Standard of Excellence employers become eligible to join this exclusive group. Congratulations to our 2022 Best Workplaces for Commuters employers!

DHL (Annville, PA)  
Eurofins Lancaster Laboratories  
WebFX

