

# EXPANDING OUR HORIZONS

2015 Annual Report



Teri Giurintano  
*Susquehanna Regional  
Transportation Partnership  
Board Chair*

# FROM OUR LEADERSHIP

## THE ONSET OF 2015

offered new and exciting challenges, as I moved to the position of Susquehanna Regional Transportation Partnership (S RTP) Chair, after serving as S RTP Secretary for several years. Working with members of the Executive Board, the S RTP staff and Board of Directors, offers multiple opportunities to help our region pursue our organizational goals. Our focus includes, decreasing traffic congestion and improving air quality, while providing support and direction to the Commuter Services of Pennsylvania program.

My shift from Secretary to Chair of the S RTP, can best be compared to leaving the congested travel lanes of a major interstate, and suddenly finding myself in the fast paced HOV lane. As a non-profit organization, guiding the direction of a program in the Transportation Demand Management (TDM) industry, we are offered a wide variety of chances to be impactful in our day-to-day operations. As Chair, the 2015 year has been extremely exciting, as we've successfully remained steadfast in our program supporting carpool matching, vanpool formation, transit utilization, biking, walking and telecommuting. In addition, we've been in the midst of thrilling new developments, as the Commonwealth of Pennsylvania welcomed a new Secretary of Transportation, and enhanced transportation legislation (ACT 89); guiding our infrastructure advances for years to come. Coupled with regional discussions of transit consolidation; a renewed interest in regional light rail prospects; improvements in regional bridges and roadways; and the probability of increased freight movement through our region from the ports of the eastern seaboard have all enabled the S RTP to maintain a pulse on cutting-edge transportation topics.

The past year has been full of accomplishments and new endeavors. Our regional footprint added four counties and an agreement with the Northeastern Pennsylvania Alliance (NEPA); offering our programs to Schuylkill, Carbon, Monroe and Pike counties.

In the spring of 2015, Commuter Services announced our partnership with the Center for Urban Transit Research, to offer regional employers the opportunity to participate in the "Best Workplaces for Commuters" program. These efforts identified five worthy recipients in our regional service area and awards were presented during a ceremony in July. In addition, the Commuter Services staff was presented with a Gold Medal, as part of the "Race to Excellence" national competition; honoring those agencies who excelled in supporting the "Best Workplaces for Commuters" program. During the summer, the S RTP Executive Board had the chance to travel to Harrisburg for a private meeting with the new Secretary of Transportation. Our discussion with the Honorable Leslie Richards, provided a rare chance to showcase our program details and gain a perspective on the future of multi-modal transportation in the Commonwealth. In the fall, the Lebanon Transit study was conducted. This was a first time endeavor for the S RTP and a joint success for the partnership between the Lebanon County Planning Department, Lebanon Transit and the Commuter Services team.

For over a decade, the S RTP has proudly guided the Commuter Services program and has strived to set an example in the transportation industry. The strength of our organization begins with the commitment and willingness of our partners (transit agencies, metropolitan planning organizations and chambers of commerce) to ignore county boundary lines on a map, and rather act in harmony for the betterment of an entire region. In 2015, a handful of S RTP members moved on to various personal and professional challenges, which offered vacant positions to be filled by new members, who brought special skills and talents to our organization. Our pillar of strength will always be measured by our dedication to the organizational mission. I am proud to move forward as Chair, in pursuit of further success in 2016; knowing the enthusiasm contained in this new influx of S RTP Board members, is combined with the experience and knowledge of the existing board members.

# Message from Executive Director

The close of the 2015 calendar year, provided an opportunity to reflect on the path we've traveled over the past twelve months. We were able to smile at our successes, grit our teeth at our challenges, and utilize the lessons we've learned from both as we implement a plan for the year ahead.

New leadership arrived on the Susquehanna Regional Transportation Partnership (S RTP) Board of Directors in January, with the ascension of Teri Giurintano as Chair. In her position as Executive Director of Lebanon Transit, Teri was no stranger to the inner workings of the S RTP, having served proudly on the Executive Board and as a Board Member for many years. With gavel in hand, Teri kicked off the year with a pledge to remain vigilant in our efforts, to be financially and environmentally impactful in our delivery of programs and services to the region.

The first quarter of the year kept the S RTP board focused on organizational growth opportunities. The Northeastern Pennsylvania Alliance (NEPA); representing Carbon, Monroe, Schuylkill and Pike counties; were formally added to the service territory, through the Memorandum of Understanding (MOU). Our organization welcomed new faces to the S RTP board from the MPO's and transit agencies, located in the NEPA region. These additions initiated the orientation and education process of solidifying our new team. The infancy of this new outreach territory has begun, and the prospects for success appear promising.

As the Spring season arrived, so did the excitement of announcing our first class of "Best Workplaces for Commuters" (BWC) award winners. In this inaugural campaign of bringing BWC to south central Pennsylvania, the staff of Commuter Services was able to identify five employer partners, worthy of the BWC designation. PetSmart and Fleetwood Industries in Berks County; the County of Dauphin, Bayer HealthCare in Lebanon County; and United Natural Foods Incorporated (UNFI) in York County. During a July event, which took place with the National Center for Transportation Research, the BWC awards were presented to the recipients by Philip Winters, Program Director for the Transportation Demand Management program.

Exciting events specific to the Commonwealth of Pennsylvania arose several times during the year. The State successfully received the new transportation legislation (Act 89); affording citizens a

new transportation infrastructure spending plan, for many years to come. Additionally, in August, Harrisburg welcomed the S RTP Executive Board with the newly appointed PennDOT Secretary of Transportation, the Honorable Leslie Richards. The setting afforded a rare face-to-face discussion with the Secretary, a brief introduction of our programs and services, and the chance to learn about her transportation plans for the Commonwealth.

The 2015 calendar year saw gasoline prices remain relatively low in comparison to prior years. This phenomenon can prove to be a difficult hurdle in our efforts to move commuters from the single occupancy vehicle to more cost-effective modes such as carpool, vanpool, transit, walking or biking. Despite the low gas prices, commuters recognized more money in their pockets, which led to an increase in our rideshare matching program; pushing the total amount of participation to over 28,000 commuters.

The Transportation Demand Management (TDM) industry fully recognizes our day-to-day battles, to remove vehicle miles from the road and improve air quality. This factor is not a win or lose proposition, instead it's a continuous effort to alter the commuting habits, regarding individuals traveling to and from work on a daily basis. The fight against traffic congestion, excessive idling, increasing vehicle maintenance costs and infrastructure wear and tear, will continue to be a long-term effort. However, the goals of TDM are attainable. The decrease in emissions are being achieved, the removal of vehicle miles from our roadways are being recognized, and the battles we fight today will be noticeable in the near future.

Please join the S RTP Board of Directors and the Commuter Services of Pennsylvania staff, by taking the next step towards making our region a healthier place to live, work and play in 2016!

Matt Boyer  
*Executive Director*



## OUR MISSION STATEMENT

The Susquehanna Regional Transportation Partnership (S RTP)/Commuter Services of Pennsylvania promotes commuting options that reduce congestion, conserve natural resources, and improve safety and mobility at a regional level, by educating and implementing innovative Transportation Demand Management (TDM) programs.



# 2015 EXECUTIVE BOARD



Ms. Teri Giurintano, *Chair, Lebanon Transit*

Mr. Jonathan Fitzkee, *Vice Chairman, Lebanon County Planning Department*

Mr. Tim Reardon, *Secretary, Tri-County Regional Planning Commission*

Ms. Kimbarley Williams, *Treasurer, Boyer & Ritter*

Mr. Matthew Boyer, *Executive Director, Commuter Services of Pennsylvania*



“ Our partnership with Commuter Services has exceeded our expectations and helped our employees learn about their commuting options. Not only have many of our employees participated in the Commuter Services programs and Bike To Work Week promotion, they also provided us with carpool parking signs as another benefit for being their partner. We are excited to further develop our relationship with them in the future, thank you for all that you do! ”

*Nick Loftus, Quality Bicycle Products*







# 2015 BOARD OF DIRECTORS



Adams County MPO (ACTPO)



Franklin County MPO



Harrisburg Area  
Transportation Study (HATS)



Lancaster MPO

## ADAMS COUNTY

Ms. Darlene Brown, *Gettysburg Adams Chamber of Commerce*  
Ms. Carrie Stuart, *Gettysburg Adams Chamber of Commerce*  
Mr. Rich Farr, *York Adams Transportation Authority (rabbittransit and Freedom Transit)*  
Mr. Andrew Merkel, *Adams Co. Office of Planning & Development*  
Mr. Chris Caba, *Adams Co. Office of Planning & Development*

## BERKS COUNTY

Ms. Gail Landis, *Greater Reading Chamber of Commerce & Industry*  
Ms. Natasha Manbeck, *Greater Reading Chamber of Commerce & Industry*  
Mr. Alan Piper, *Berks County Planning Commission*  
Mr. Michael Golembiewski, *Berks County Planning Commission*

## FRANKLIN COUNTY

Mr. Chris Patterson, *Greater Chambersburg Chamber of Commerce*  
Ms. Odessa Trinkle, *Franklin County Planning Department*  
Mr. Phil Tarquino, *Franklin County Planning Department*  
Mr. Larry Camp, *Franklin MPO*

## DAUPHIN, CUMBERLAND AND PERRY COUNTIES

Ms. Larissa Bailey, *Harrisburg Regional Chamber & CREDC*  
Mr. Shaun Donovan, *Harrisburg Regional Chamber & CREDC*  
Mr. Bill Jones, *Capital Area Transit (CAT)*  
Mr. Robert Philbin, *Capital Area Transit (CAT)*  
Mr. Tim Reardon, *Tri-County Regional Planning Commission*

## LANCASTER COUNTY

Ms. Heather Valudes, *Lancaster Chamber of Commerce*  
Mr. Thomas Baldridge, *Lancaster Chamber of Commerce*  
Mr. David Kilmer, *South Central Transit Authority (BARTA and RRTA)*  
Mr. Jeff Glisson, *South Central Transit Authority (BARTA and RRTA)*  
Ms. Harriet Parcels, *Lancaster County Planning Commission*  
Mr. David Royer, *Lancaster County Planning Commission*

## LEBANON COUNTY

Ms. Teri Giurintano, *Lebanon Transit*  
Ms. Cindy Binner, *Lebanon Transit*  
Mr. Tom Kotay, *Lebanon County Planning Department*  
Mr. Jonathan Fitzkee, *Lebanon County Planning Department*



## NEPA

Ms. Kathy Henderson, *Carbon Chamber  
& Economic Development*

Mr. Michael Mrozinski, *Pike County  
Community Planning*

Ms. Peggy Howarth, *Monroe County  
Transit Authority*

Mr. David Bekisz, *Schuylkill  
Transportation System*

Ms. Christine Meinhart, *Monroe County  
Planning Commission*

Mr. David Bodnar, *Carbon County  
Planning and Development*

## YORK COUNTY

Ms. Janelle Black, *York County  
Economic Alliance*

Ms. Kimberly Hogeman, *York County  
Economic Alliance*

Ms. Jenna Reedy, *York Adams  
Transportation Authority (rabbittransit  
and Freedom Transit)*

Mr. Joe Heffner, *York County  
Planning Commission*

Ms. Felicia Dell, *York County  
Planning Commission*

## MEMBER AT LARGE

Mr. Dennis Stichter, *Shaker Engineering*



Lebanon (LEBCO) MPO



Northeast Pennsylvania  
Alliance



Reading Area Transportation  
Study (RATS)



York MPO (YAMPO)



# A PLANNED VISION

## OUR STRATEGIC PLAN

Identifying a strategic vision for a Transportation Demand Management (TDM) entity such as Commuter Services of Pennsylvania is quite simple and can be summed up in three words: *“stop driving alone.”* Attempting to convince a diverse population of independently-minded commuters to put this principle into practice, may not be as simple. Looking toward the future, the use of the analogy, *“change is on the horizon,”* holds true in the arena of taking cars off the roads and improving air quality across the region.

In Pennsylvania, the state legislature has provided new groundwork for the continuation and improvement of our transportation infrastructure. The ‘doom and gloom’ mentality of becoming the pothole state of the union, has now blossomed into ACT 89; a robust plan offering financial resources to keep transportation planners busy for years to come.

In the depths of this new legislative initiative, we now see words that read like beautiful song lyrics in our TDM ears. ‘Multi-modal transportation’ offers new opportunities for enhancing our transit lines, biking routes and walking paths. The core principles of finding alternative modes of

transportation to combat the single occupancy vehicle are back in the discussion and fueling the positive attitude of TDM professionals across the state. Transportation leaders such as, the new PennDOT Secretary of Transportation, Leslie Richards, believes in bringing improvements to our transportation infrastructure by making multi-modal options a priority in new project developments.

With more than a decade of professional TDM service in the region, the Susquehanna Regional Transportation Partnership (SRTP) welcomes these new developments in the transportation industry. The SRTP (via the Commuter Services of Pennsylvania program) maintains a position of influence over tens of thousands of commuters across the region by educating individuals and businesses about cost-effective commuting alternatives compared to driving alone.

Success in the TDM industry is often measured by the number of cars taken off the road, resulting with fewer vehicle miles traveled. With additional carpools formed daily, new vanpools organized weekly, riders taking advantage of monthly transit, a growing segment of our community walking, biking and telecommuting; positive and effective changes are fast approaching.







# Susquehanna Regional Transportation Partnership Acknowledges Appreciation for Corporate “At-Large” Board Member

In 2014, the Susquehanna Regional Transportation Partnership (SRTP) celebrated the ten-year anniversary of their Commuter Services program. The successful efforts to remove vehicle miles traveled from roadways, and to improve regional air quality would not have come to fruition without the dedication and guidance from a devoted group of board members.

Dennis Stichter of Shaker Engineering and formally of Supreme Mid-Atlantic Corporation, both in Jonestown (Lebanon County), is one of the earliest SRTP supporters. Known by his friends and fellow board members as Denny, he was not from the typical mold of county planners, transit agency directors or chamber of commerce representatives. Instead, Denny was a community leader from the private sector, who was selected as the very first “At-large” member of the SRTP.

Jon Fitzkee, Lebanon County Transportation Planner and current Vice Chairman of the SRTP, was on the “At-large” selection committee and stated, “The committee conducted a regional search throughout multiple southcentral PA counties, seeking a corporate presence on the SRTP board. We reviewed dozens of resumes and were extremely pleased to welcome Denny aboard. His commitment and enthusiasm for our cause, has been contagious and tremendously helpful to our mission.”

The outreach model implemented by Commuter Services, takes the commuter-friendly programs and services to employer partners throughout the southcentral Pennsylvania region in hopes of getting participation from the employees of these partners. The inclusion of Denny on the SRTP board, has brought new insight to how the delivery of these programs could be enhanced to attract new corporate interest and participation. Denny also pioneered methods to help outreach staff show employers how the financial benefits garnered by those commuting daily to work, could create happier and more productive employees in the workplace.

Denny wrapped up his service on the SRTP board of directors at the end of 2015. “The energy, advocacy, vision, and passion Denny brought to the board room each and every meeting, has left huge shoes to fill in 2016 and beyond. Denny was a problem solver, a team player and an absolute joy to interact with personally and professionally,” expressed Matt Boyer, Executive Director of Commuter Services.

As the SRTP begins to create a strategic plan for the next decade, they can proceed with confidence knowing the foundation created for this organization was engineered by pillars of the community, such as Denny Stichter. We sincerely appreciate and thank Denny for his service.



# Best Workplaces for Commuters

## Five Local Employers Selected as 2015 “Best Workplaces for Commuters”

Commuter Services of Pennsylvania, in partnership with the National Center for Transit Research (NCTR) at the University of South Florida, designated five local employers as “Best Workplaces for Commuters” in 2015. The employers received this national recognition for their standard of excellence, and offered an extensive list of commuter benefits and transportation options to their employees. Companies who pursued the “Best Workplaces for Commuters” status, had to meet national guidelines established by NCTR. Only a small percentage of employers nationwide, possessed the willingness and ability to attain this exceptional standing.

The “Best Workplaces for Commuters” acknowledged employers who had excelled at implementing green commuter programs. These programs included ridesharing, transit benefits, biking/walking, teleworking, flexible work schedules, and other transportation demand management strategies. The programs were designed to decrease traffic congestion and improve traffic-related air pollution levels. By offering these commuter benefits, the selected five employers were committed to reducing regional pollution; obtaining greater economical savings; and eliminating employee stress, caused by single occupant vehicle commuting.

The employers who received this recognition included:

- **Fleetwood Fixtures, Berks County**
- **PetSmart, Berks County**
- **County of Dauphin, Dauphin County**
- **Bayer HealthCare, Lebanon County**
- **United Natural Foods, Inc., York County**



“Best Workplaces for Commuters recognized employers who offered commuter benefits, such as subsidized transit passes, vanpool subsidies, ridematching services or telework programs,” said Phil Winters, NCTR’s National Transportation Demand Management Program Director and Co-manager for Best Workplaces for Commuters. “Offering commuter benefits was a win-win situation for employees who changed their commuting habits, saved time, money and stress, and gained a competitive edge in employee recruiting and retention.”

Commuter Services held an awards ceremony on July 24th to congratulate these employers and publicly recognize their efforts. For more information on “Best Workplaces for Commuters,” please visit [www.bestworkplaces.org](http://www.bestworkplaces.org).



### “Best Workplaces for Commuters Awards”

Matt Boyer, Executive Director of Commuter Services of Pennsylvania, offered opening comments and introductions.

Phil Winters, Director of Transportation Demand Management Program, Center for Urban Transportation Research delivered a presentation regarding, “Best Workplaces for Commuters.”





# 2015 BWC AWARD WINNERS



**"Best Workplaces for Commuters"**  
winners and staff in attendance.

(see story on page 11)



## **Bayer HealthCare Award**

(From: L-R) Sherry Zimmerman, Human Resources Manager with Bayer HealthCare; Cherilyn Comp, Employer Outreach Manager with Commuter Services of Pennsylvania.



## **Dauphin County Award**

(From: L-R) Skip Memmi, Director, Dauphin County Community and Economic Development; and Phil Winters, Director of Transportation Demand Management Program, Center for Urban Transportation Research.



## **Fleetwood Fixtures Award**

(From: L-R) Kelli Hoffman, Marketing Coordinator with Fleetwood Fixtures; Doug Oswald, Director of Information Technology with Fleetwood Fixtures; Mark Eastadt, Employer Outreach Manager with Commuter Services of Pennsylvania.



## **United Natural Foods Inc. Award**

(From: L-R) Adam Collins, Warehouse Manager with United Natural Foods Inc.; Kandi Fox, Employer Outreach Manager with Commuter Services of Pennsylvania.



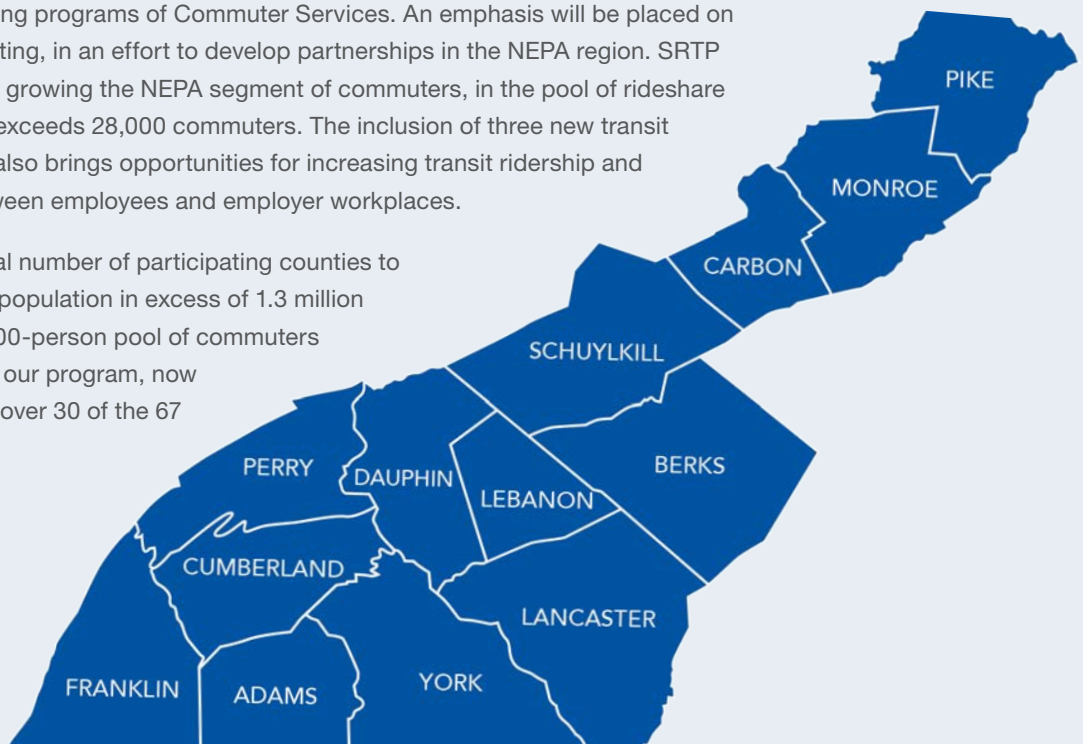


# Susquehanna Regional Transportation Partnership Footprint Expands in 2015

As new locations were added to the Commuter Services geographic footprint in 2015, the Susquehanna Regional Transportation Partnership (SRTTP) also welcomed new members to their board of directors. The successful completion of a “Memorandum of Understanding,” between the SRTTP and the Northeastern Pennsylvania Alliance (NEPA), allowed the programming of Commuter Services to be extended to Carbon, Monroe, Pike and Schuylkill counties. The expansion also brought new talent to the panel of SRTTP board members including, Kathy Henderson, Carbon, Chamber & Economic Development; Michael Mrozinski, Pike County Community Planning; Christine Meinhart, Monroe County Planning Commission; Peggy Howarth, Monroe County Transportation Authority; David Bodnar, Carbon County Planning and Development; and Dave Bekisz, Schuylkill Transportation System.

The NEPA region contains a wealth of businesses, organizations and most importantly, employees who can benefit from the cost saving programs of Commuter Services. An emphasis will be placed on outreach activities and marketing, in an effort to develop partnerships in the NEPA region. SRTTP plans to continue the effort of growing the NEPA segment of commuters, in the pool of rideshare participants, which currently exceeds 28,000 commuters. The inclusion of three new transit agencies in the NEPA region also brings opportunities for increasing transit ridership and finding new connections between employees and employer workplaces.

This expansion brings the total number of participating counties to 13, with an overall commuter population in excess of 1.3 million people. Additionally, the 28,000-person pool of commuters seeking rideshare matches in our program, now includes home addresses for over 30 of the 67 Pennsylvania counties.



“We’re excited to have Commuter Services now expanding into Northeastern Pennsylvania and are confident that our region’s employers and employees will recognize the benefits of new commuting options. Moving individuals from single occupancy vehicles into vanpools and other shared vehicles will help reduce congestion in our busiest corridors. We look forward to seeing the rewards of Commuter Services expand over the coming years.”

**Alan S. Baranski**, Vice President –  
Transportation Planning Services,  
Northeastern Pennsylvania Alliance



# Lebanon Transit New Service & Route Study

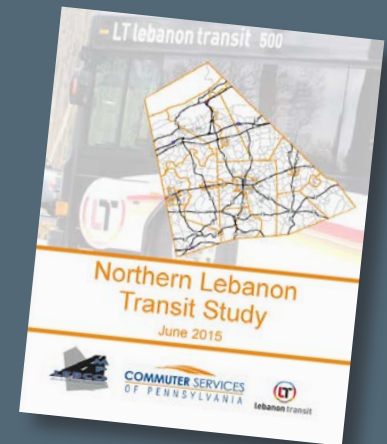
An agreement between the Lebanon County Planning Department and the Susquehanna Regional Transportation Partnership (SRTP), provided the Commuter Services staff with the opportunity to conduct a Lebanon Transit new service and route study.

The study offered an in-depth look at potential growth opportunities for new transit service in Lebanon County. An emphasis was placed on determining what, if any areas in the northern part of the county, were better served by altering or extending existing transit lines.

The content of the study analyzed data secured from employer, employee and general public surveys.

The information reported regarded individual travel patterns, time of travel, willingness to utilize public transportation, identification of commuter costs and other relevant factors. The study then disseminated specific details of employer locations, major travel routes, commuter travel needs, work shift variations; in addition to recommendations for appropriate future routes.

The success of the study was greatly aided by the cooperation of staff members from the Lebanon County Planning Department, Lebanon Transit, and Lebanon Valley Chamber of Commerce.



# IN THE COMMUNITY 2015

13 new employer partners

23 new community partners

36 vans in service

57 emergency rides home

90 new employer meetings

118 live chat sessions

380 worksite events

432 follow up meetings

420 employer and community partners/participants

935 customer service phone calls

1,268 customer service emails

4,164 new applications collected



## Earth Day | April 19-25

In 2015, **340 commuters** logged **65,722 miles** by riding transit, carpooling, vanpooling, bicycling, walking or teleworking, during the week of April 19-25.

## Bike To Work Week | May 10-16

A total of **120 participants** logged **4,859 miles** while commuting to work by bicycle, during the 2015 annual Bike to Work Week Challenge.

## Dump the Pump | June 18

**The June 18th Dump the Pump essay contest, encouraged commuters** to take a more efficient transportation mode on National Dump the Pump Day. In 250 words or less, commuters wrote about how much money they saved, and/or how their quality of life has improved when they “Dumped the Pump” by using a non-single occupancy vehicle commuting option.

## Try Transit Month | Month of September

Commuter Services of Pennsylvania launched its fourth annual ‘Try Transit’ month in September 2015, encouraging local commuters to try bus or rail transportation options, versus driving alone. **A total of 280 participants, across 16 counties,** logged their transit trips. Participants logged a total of 204,688 miles traveled by bus or train, instead of their cars during the month of September.



“Commuter Services of PA has been so helpful. By enrolling in their free services, they were able to quickly find a carpool partner for my work commute. I had no idea my neighbor travels the same way as me!”

*Miriam Hornberger*



## New Community Partners in 2015

- Borough of Gettysburg
- Borough of West Reading
- Caernarvon Township
- Cumberland Area Economic Development
- Ephrata Public Library
- Franklin County Cyclists
- Geo Group Franklin
- Greater Carlisle Project
- Harrisburg Downtown Improvement District
- Integrity Staffing York
- Lehigh University CARE Study
- Lititz Public Library
- Lower Paxton Township
- North Lebanon Township
- North Londonderry Township
- PA Careerlink Monroe County
- Pike County Workforce Development
- Shippensburg Township
- South Londonderry Township
- Upper Tulpehocken Township
- Warwick Township
- Washington Township
- West Hanover Township

## New Employer Partners in 2015

- Comcast Lebanon
- Comcast York
- DB Schenker
- OHL Kriner Rd. Chambersburg
- OHL Sheffler Rd. Chambersburg
- PA Careerlink Lancaster County
- SMX/Amazon
- The Warrell Corporation York
- Thred Up
- Urban Outfitters
- YTI Career Institute Lancaster
- YTI Career Institute York
- YTI Motorcycle Technology Center

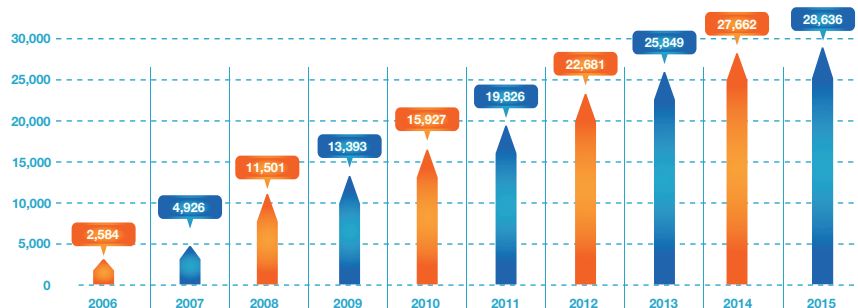
## 2015 Commuter Services of PA Staff



Front row from left: Laura Heilman, Outreach/Vanpool Manager and Bike/Ped Coordinator; Stacy Newcomer, Deputy Project Manager; and Cheryl Comp, Employer Outreach Manager.

Back row from left: Mark Easteadt, Employer Outreach Manager; Rob Mordan, Employer Outreach Manager; Amy Klinedinst, Programs Coordinator; Kandi Fox, Employer Outreach Manager; Jessica Bosley, Outreach Coordinator; Julia Gandara, Outreach Coordinator; Tim Beckwith, Marketing Manager; and Matt Boyer, Executive Director/Project Manager.

## Milestone: 28,636 Commuters in Database



# GET INVOLVED

To find out how you can get involved,  
visit us at [www.PaCommuterServices.org](http://www.PaCommuterServices.org)  
or call us at 1.866.579.RIDE.



[Facebook.com/CommuterServicesPA](https://www.facebook.com/CommuterServicesPA)



[Twitter.com/SaveOnCommutePA](https://twitter.com/SaveOnCommutePA)



Search for Commuter Services of Pennsylvania



[Instagram.com/PACommuters](https://www.instagram.com/PACommuters)



Commuter Services is a program of the non-profit Susquehanna Regional Transportation Partnership, whose board includes Capital Area Transit (CAT, Cumberland-Dauphin-Harrisburg), Lebanon Transit (LT), South Central Transit Authority (BARTA, Berks & RRTA, Lancaster) and York Adams Transportation Authority (rabbitttransit, York & Freedom Transit, Adams). Adams, Franklin, Harrisburg (Cumberland, Dauphin and Perry counties), Lancaster, Lebanon, NEPA (Schuylkill, Carbon, Monroe and Pike counties), Reading and York MPOs. The Harrisburg Regional Chamber & CREDC; the Gettysburg Adams, Greater Chambersburg and Lebanon Valley Chambers of Commerce; the Greater Reading and Lancaster Chambers of Commerce & Industry and the York County Economic Alliance.

Funding is provided by the Federal Highway Administration and PennDOT in partnership with the participating MPOs. ©2016 Commuter Services of Pennsylvania